

EIR CORE

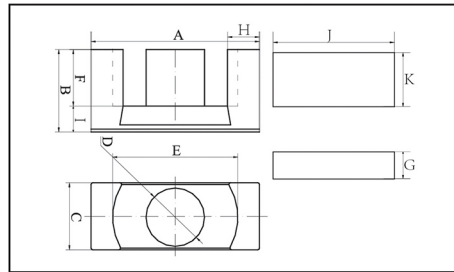
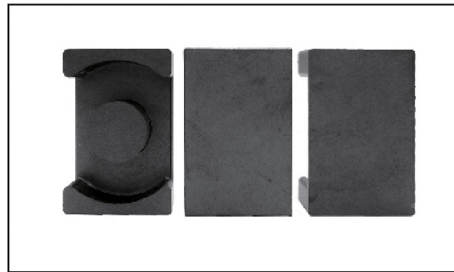


FIG.1

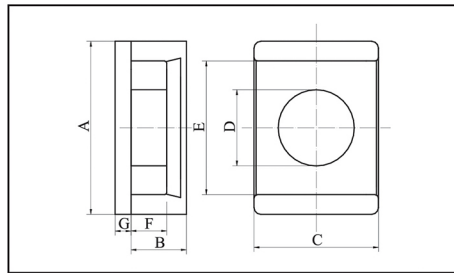


FIG.2

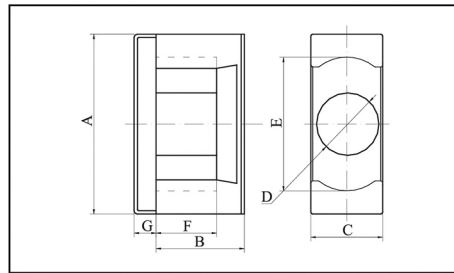


FIG.3

TYPE	FIG.	Dimensions(mm)							
		A	B	C	D	E	F	G	
EIR9.8/7.8/4	1	9.8±0.25	5.8±0.15	4.0±0.2	3.0±0.15	8.0±0.25	3.8±0.15	2.0±0.1	
EIR10.3/8/4.2	1	10.3±0.25	5.8±0.15	4.2±0.2	3.0±0.15	8.7±0.25	3.6±0.15	2.2±0.15	
EIR12/5/9	2	12.0±0.15	3.55±0.1	9.0±0.2	4.8±0.1	10.0±0.25	2.55±0.1	1.0±0.05	
EIR13/4/9	2	12.8±0.3	3.35±0.1	8.7±0.25	5.0±0.15	11.2±0.3	2.25±0.1	1.1±0.1	
EIR18/8.5/10	4	18.0±0.35	6.5±0.15	10.0±0.25	7.14±0.15	14.3min	4.5±0.15	2.0±0.2	
EIR20/8/7	1	19.8+0.6/-0.3	5.8±0.15	6.6+0.25/-0.15	6.0+0.25/-0.15	15.8+0.65/-0.25		2.2±0.1	
EIR20/9/14	5	20.0±0.35	6.3±0.15	14.0±0.3	8.8±0.2	18.0±0.35	4.1±0.2	2.3±0.15	
EIR22.6/9.1/14	5	22.6±0.4	6.9±0.1	14.0±0.3	8.8±0.2	19.7min	4.7±0.2	2.2±0.1	
EIR23/7/13	3	23.2±0.45	5.1±0.1	12.5±0.25	8.0±0.2	20.2±0.4	3.1±0.15	2.1±0.1	
EIR25/10/18	5	25.0±0.4	8.0±0.1	18.0±0.3	11.0±0.2	22.0±0.4	5.15±0.15	2.3±0.1	
EIR25/8/18	5	25.0±0.4	5.6±0.1	18.0±0.3	11.0±0.2	22.0±0.4	3.2±0.15	2.3±0.1	
EIR28/9/12	3	28.0±0.3	6.6±0.15	12.0±0.25	9.0±0.1/-0.3	23.4+0.4/-0.2	4.0±0.2	2.6±0.2	
EIR28/18/11	1	28.55±0.55	14.0±0.2	11.4±0.25	9.9±0.25	21.2min	9.65±0.25	3.5±0.3	
EIR30/11/20	5	30.0±0.4	8.0±0.15	20.0±0.3	11.0±0.2	26.0±0.4	5.3±0.2	2.7±0.1	
EIR30.2/9.9/20	6	30.2±0.42	7.25±0.15	20.0±0.3	11.3±0.2	25.0±0.38	4.6±0.15	6.65±0.2	
EIR35/25/11	7	35.0±0.5	20.4±0.2	11.3±0.3	11.3±0.25	25.6min	14.7±0.3	4.6±0.2	

EIR CORE

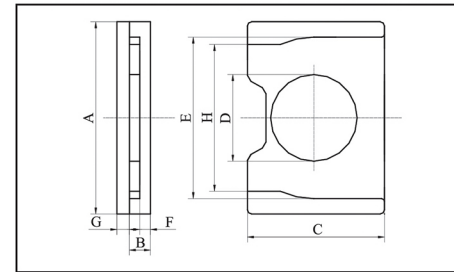


FIG.4

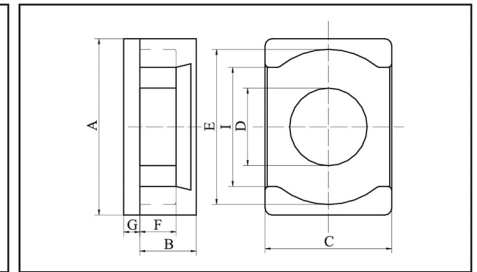


FIG.5

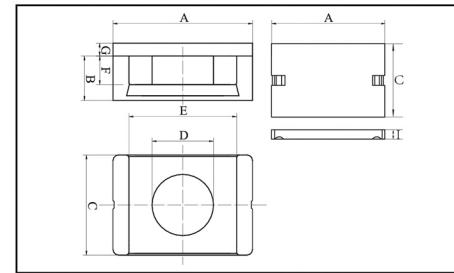


FIG.6

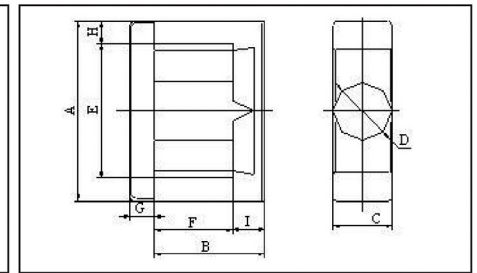


FIG.7

Dimensions(mm)				Cl (mm ³)	Ae (mm ²)	Le (mm)	Ve (mm ³)	AL±25%(nH/N ²)			Weight g/PRS
I	J	K	L					FW40	FW44	FW95	
	10.2±0.25	4.0±0.2		1.73	9.33	16.1	150.3	630	640	750	1.04
2.2±0.15	10.4±0.25	4.3±0.2	7.8min	1.67	9.53	15.95	152	640	650	750	1.2
				0.94	18.03	16.9	304.8	1580	1600	1870	1.49
				0.72	18.86	13.54	255.3	1360	1370	1580	1.45
	11.74min			0.61	39.48	24.03	948.5	2800	2800	3350	4.9
2.2±0.15				0.84	29.17	24.49	714.4	2300	2300		3.75
12.86±0.35	2.3±0.15			0.39	60.09	23.58	1416.7	4350	4350	5100	8.17
15.7+0.6/-0.2				0.45	60.85	27.34	1663.6	4200	4200	5050	9.8
17.5min				0.53	50.2	26.6	1340	3400	3400	4170	7.03
15.2±0.7				0.29	97.1	28.5	2771	5600	5600	7450	15.9
14.5min				0.26	93.3	24.25	2262.4	6600	6600	7800	13.7
				0.5	63.26	31.47	1991	3800	3800	4600	11.9
					85.1		3734				21.5
				0.3	110.1	32.93	3625	6000	6000	7100	21.35
2.65±0.1	2.0±0.2	28.8±0.2		0.33	104.17	34.38	3581.6	5800	5800	8000	17.2
	5.7±0.2			0.57	105.7	60.34	6378	4000	4000	5250	35.86